

Certification for Cyber Essentials mark

The Cyber Essentials mark is a cybersecurity certification for organisations that are embarking on their cybersecurity journey. It is targeted at organisations such as Small and Medium Enterprises (SMEs). Some SMEs have limited IT and/or cybersecurity expertise and resources; the Cyber Essentials mark aims to enable them to prioritise the cybersecurity measures needed to safeguard their systems and operations from common cyber-attacks.

The Cyber Essentials mark also serves to recognise the organisations that have put in place good cyber hygiene measures.

CSA has enhanced Cyber Essential certification to provide broader coverage beyond classical IT security. The new certification framework now includes Cloud Security, Operational Technology (OT) Security, and AI Security, ensuring businesses can effectively safeguard their digital operations.

Cyber Essentials for Health Information Management System (HIMS) Vendors

This is a sub-scheme of Cyber Essentials (2025), co-developed by MOH and CSA and is applicable to Health Information Management (HIMS) vendors under the Ministry of Health HIA-compliant HIMS (HCH) Certification framework.

Cyber Essentials for HIMS vendors will replace Cyber Essentials for CMS vendors. These will need to be met by Health Information Management System(HIMS) vendors, e.g. Clinic Management Systems (CMS) vendors.

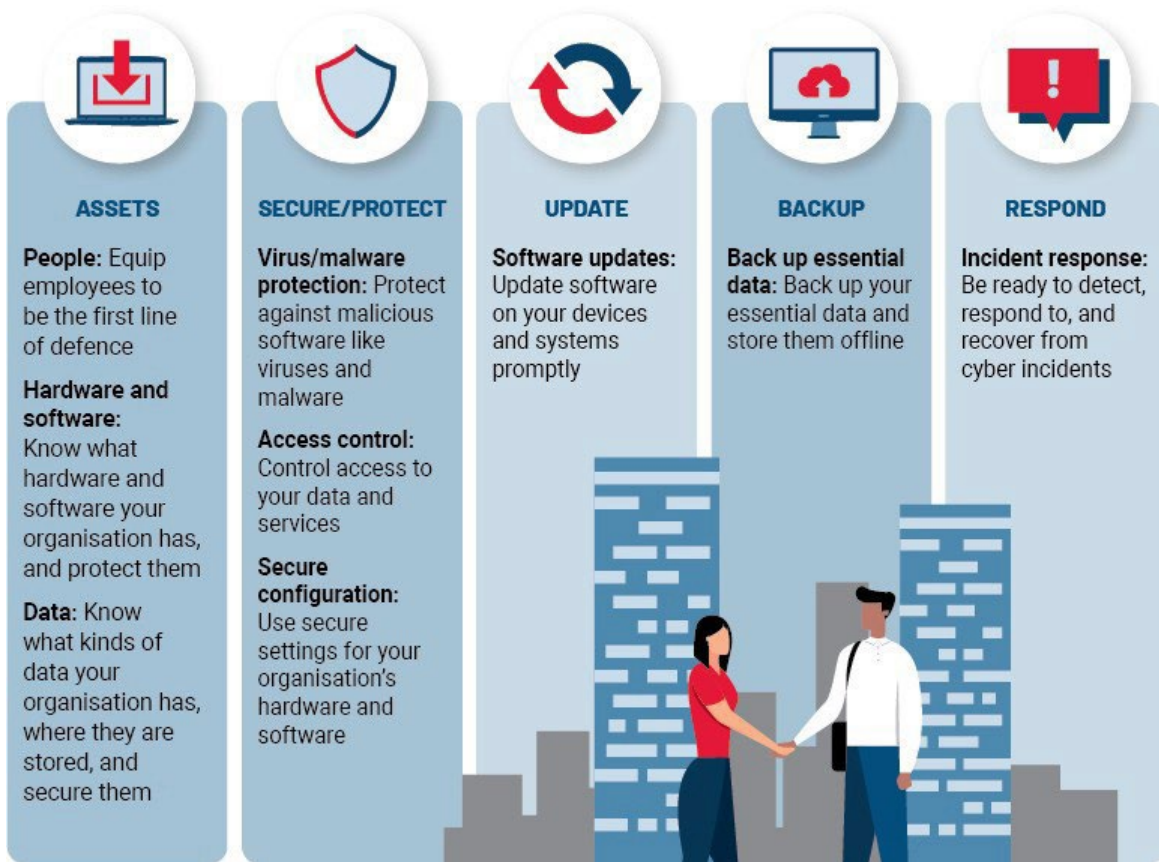
Cyber Essentials for Health Information Act (HIA) Entities

This is a sub-scheme of Cyber Essentials (2025), co-developed by MOH and CSA, and is applicable to Health Information Act (HIA) entities).

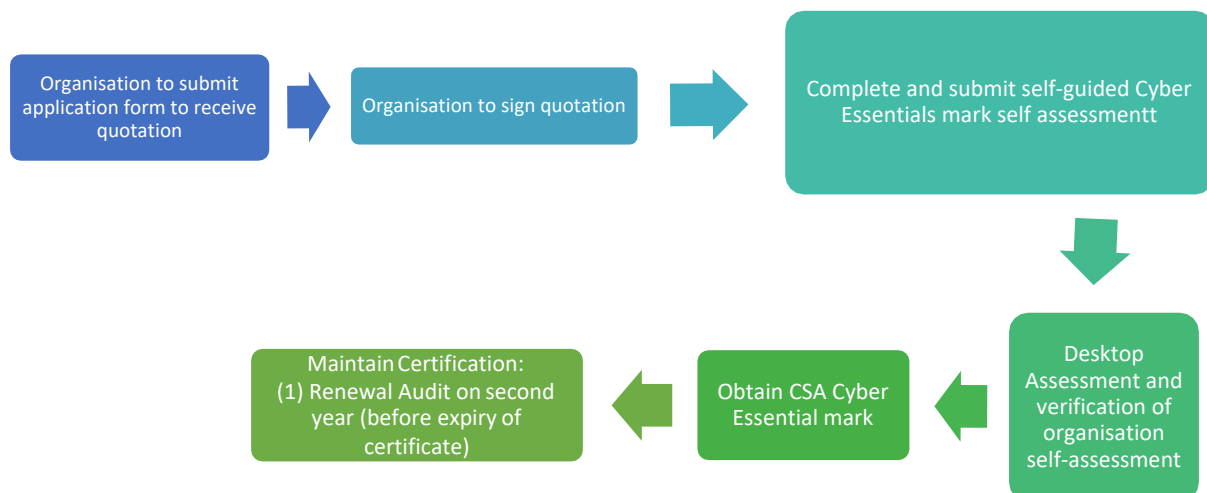
Why should my organisation apply?

- Tailored to your organisation's cybersecurity needs
- Simplifies cybersecurity by prioritising the measures to focus on first
- Guides your organisation to implement cyber hygiene measures against common cyber-attacks
- Provides recognition of your cybersecurity practices

What measures does my organisation need to implement?



Application Process



Certification Duration and Mode of Assessment

The Cyber Essentials certification is valid for a duration of 2 years. The mode of assessment will involve desktop review and verification of the organisation's self-assessment by an independent assessor from the appointed certification body.

Application Fee and Funding Support

Cyber Essentials (2025) Certification Fee						
Quantity of End-Points	Classical Cybersecurity		Add-on Digital Technologies			
	Classical Cybersecurity	Maximum Level of Support from CSA	Cloud Security	OT Security	AI Security	Maximum Level of Support from CSA
1 – 10	\$400	\$250	+ \$100	-	+ \$100	\$50
11 – 20	\$500	\$350	+ \$150	-	+ \$150	\$50
21 – 50	\$600	\$450	+ \$200	-	+ \$200	\$50
51 – 100	\$650	\$600	+ \$250	-	+ \$250	\$100
101 – 200	\$700	\$650	+ \$300	-	+ \$300	\$100
201 – 500 (in increments of 100 end-points)	\$800	Funding support is available up to 1 st 200 end-points only.	+ \$350	-	+ \$350	Funding support is available up to 1 st 200 end-points only.
501 and above (in increments of 100 end-points)	\$900		+ \$400	-	+ \$400	

- Applicable for first time application only; Organisation that had previously secured funding support for Cyber Essentials (2022) are not eligible
- Only Singapore registered businesses and Non-Profit Organisations (NPO) incorporated in Singapore are eligible

Quantity of End-Points	Classical Cybersecurity	Cyber Essential for ICT Vendor	Maximum Level of Support from CSA
1 – 10	\$400	+ \$100	\$250
11 – 20	\$500	+ \$150	\$350
21 – 50	\$600	+ \$200	\$450
51 – 100	\$650	+ \$250	\$600
101 – 200	\$700	+ \$300	\$650
201 – 500 (in increments of 100 end-points)	\$800	+ \$350	Funding support is available up to 1 st 200 end-points
increments of 100 end-points)			

Cyber Essential for sub-schemes

Quantity of End-Points	Cyber Essentials for HIB Entities	Maximum Level of Support from CSA for HIB entities	Cyber Essentials for HIMS Vendors	Maximum Level of Support from CSA for HIMS Vendors
1 – 5	\$450	\$250	\$450	\$250
6 – 10	\$450	\$250	\$450	\$300
11 – 20	\$575	\$350	\$575	\$400
21 – 50	\$675	\$450	\$675	\$500
51 – 100	\$725	\$650	\$725	\$675
101 – 200	\$775	\$725	\$775	\$725
201 – 500 <i>(in increments of 100 end-points)</i>	\$900	<i>Funding support is available up to 1st 200 end-points only.</i>	\$900	<i>Funding support is available up to 1st 200 end-points only.</i>

Table 1 – Cyber Essentials Certification Fees and Funding Support Provided by CSA